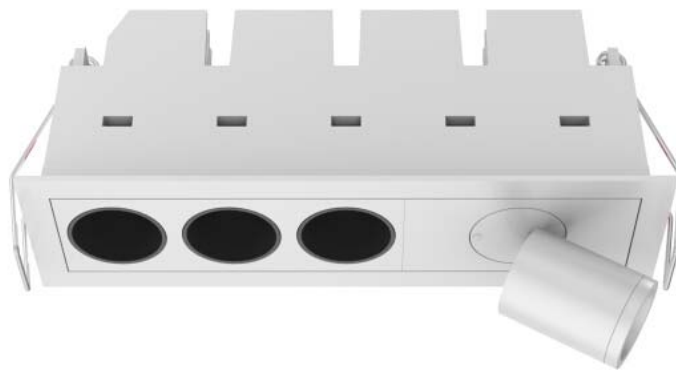


**LED Downlight FUSION Series LE-FF3-FS1-9W-930-40D**  
**Black**



Light Output Ratio:	100.0%	
Luminaire Power:	10.65 W	
SHR Nominal:	0.50	Calculated using the TM5
SHR Maximum:	0.55	fine grid method.

C Range: 0 - 360DEG  
C Interval: 15.0DEG  
Test Speed: HIGH  
Temperature: 25.3DEG  
Operators: Meng Yongjian  
Test Date: 2017-06-05

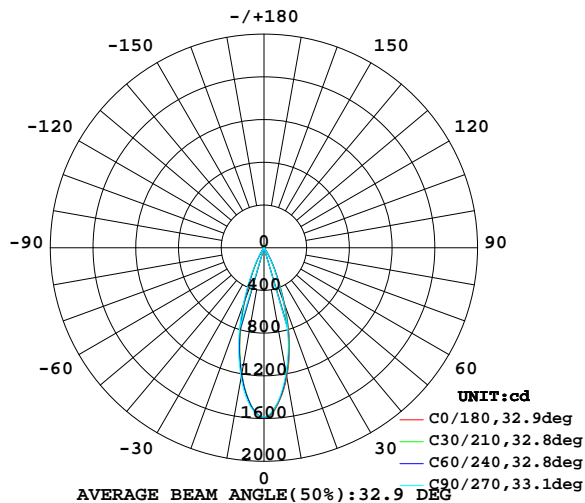
$\gamma$  Range: 0 - 90DEG  
 $\gamma$  Interval: 1.0DEG  
Test System: EVERFINE GO-2000B\_V1 SYSTEM V2.0.288  
Humidity: 52%  
Test Distance: 5.850m [K=1.0000]  
Remarks:

## LUMINAIRE PHOTOMETRIC TEST REPORT

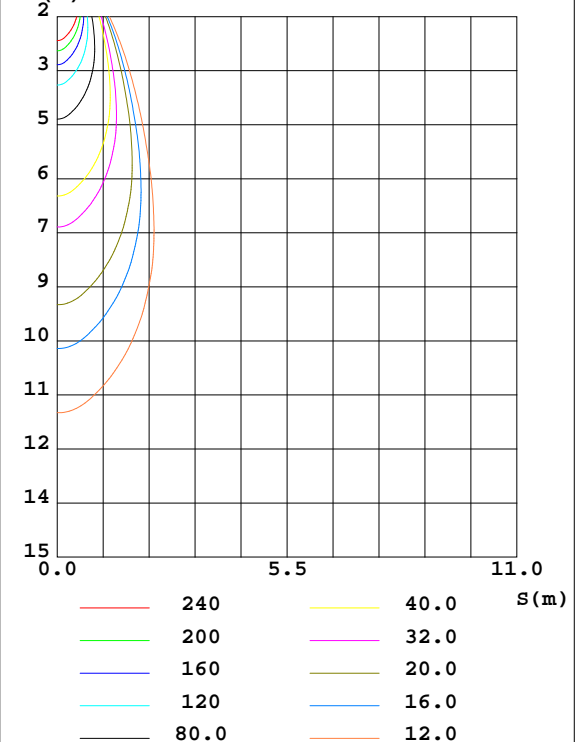
Test:U:220.8V I:0.0557A P:10.65W PF:0.8669 Lamp Flux:535.228x1 lm		
NAME: FF3-FS1-9W-930-40D Black	TYPE:Downlight	SERIAL No.:
SPEC.:3000K	DIM.: L153mm*W45mm*H60mm	
MFR.:		

DATA OF LAMP		PHOTOMETRIC DATA Eff: 50.24 lm/W			
MODEL	CREE-3000K	Imax(cd)	1594	S/MH(C0/180)	0.53
NOMINAL POWER(W)	11.0	LOR(%)	100.0	S/MH(C90/270)	0.55
RATED VOLTAGE(V)	220	TOTAL FLUX(lm)	535.23	$\eta$ UP,DN(C0-180)	0.0,49.6
NOMINAL FLUX(lm)	535.228	CIE CLASS	DIRECT	$\eta$ UP,DN(C180-360)	0.0,50.4
LAMPS INSIDE	1	$\eta$ up(%)	0.0	CIBSE SHR NOM	0.50
TEST VOLTAGE(V)	220	$\eta$ down(%)	100.0	CIBSE SHR MAX	0.55

LUMINOUS INTENSITY DISTRIBUTION DIAGRAM



C0 PLANE ISOLUX DIAGRAM (UNIT:lx)



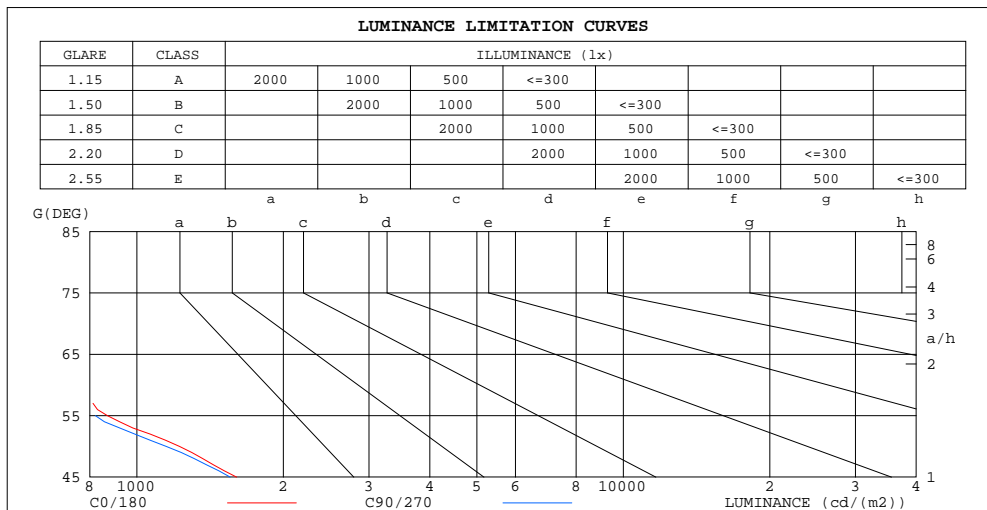
C Range: 0 - 360DEG  
 C Interval: 15.0DEG  
 Test Speed: HIGH  
 Temperature:25.3DEG  
 Operators:Meng Yongjian  
 Test Date:2017-06-05

$\gamma$  Range: 0 - 90DEG  
 $\gamma$  Interval: 1.0DEG  
 Test System:EVERFINE GO-2000B\_V1 SYSTEM V2.0.288  
 Humidity:52%  
 Test Distance:5.850m [K=1.0000]  
 Remarks:

## ZONAL FLUX DIAGRAM AND LUMINANCE LIMITATION CURVES

### ZONAL FLUX DIAGRAM:

$\gamma$	C0	C45	C90	C135	C180	C225	C270	C315	$\gamma$	$\Phi$ zone	$\Phi$ total	$\%lum, lamp$
10	1231	1217	1191	1190	1204	1189	1236	1234	0- 10	131.8	131.8	24.6,24.6
20	567.8	548.9	526.5	510.9	521.0	531.8	572.4	570.5	10- 20	241.1	372.9	69.7,69.7
30	124.1	120.8	102.1	88.63	88.58	94.34	110.7	120.1	20- 30	126.4	499.2	93.3,93.3
40	13.43	13.51	12.54	11.08	10.04	9.685	11.09	11.83	30- 40	24.32	523.5	97.8,97.8
50	5.378	5.678	5.052	5.055	4.932	4.885	5.018	5.184	40- 50	5.774	529.3	98.9,98.9
60	2.582	2.640	2.372	2.391	2.397	2.439	2.465	2.472	50- 60	3.118	532.4	99.5,99.5
70	1.254	1.313	1.169	1.208	1.188	1.223	1.267	1.267	60- 70	1.799	534.2	99.8,99.8
80	0.4269	0.4128	0.3788	0.3822	0.3908	0.4180	0.4455	0.4399	70- 80	0.7867	535.0	100,100
90	0.0241	0.0197	0.0219	0.0241	0.0153	0.0175	0.0175	0.0262	80- 90	0.2098	535.2	100,100
100									90-100			
110									100-110			
120									110-120			
130									120-130			
140									130-140			
150									140-150			
160									150-160			
170									160-170			
180									170-180			
DEG	LUMINOUS INTENSITY:cd									UNIT:lm		



LUMINANCE cd/(m2)		
G(DEG)	C0/180	C90/270
85	338	279
80	359	319
75	383	357
70	536	500
65	640	594
60	755	694
55	870	822
50	1223	1149
45	1603	1555

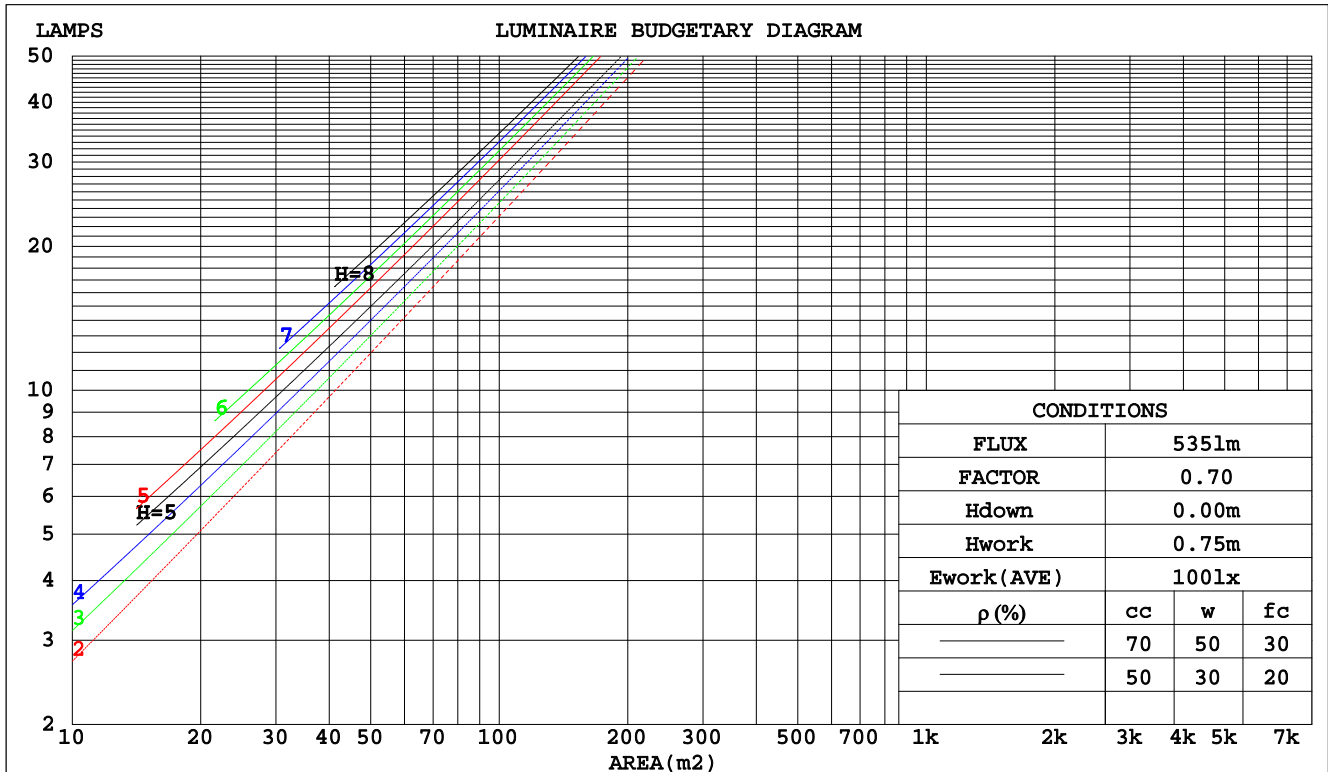
C Range: 0 - 360DEG  
 C Interval: 15.0DEG  
 Test Speed: HIGH  
 Temperature:25.3DEG  
 Operators:Meng Yongjian  
 Test Date:2017-06-05

$\gamma$  Range: 0 - 90DEG  
 $\gamma$  Interval: 1.0DEG  
 Test System:EVERFINE GO-2000B\_V1 SYSTEM V2.0.288  
 Humidity:52%  
 Test Distance:5.850m [K=1.0000]  
 Remarks:

## CU AND LUMINAIRE BUDGETARY ESTIMATE DIAGRAM

Test:U:220.8V I:0.0557A P:10.65W PF:0.8669 Lamp Flux:535.228x1 lm		
NAME: FF3-FS1-9W-930-40D Black	TYPE:Downlight	SERIAL No.:
SPEC.:3000K	DIM.: L153mm*W45mm*H60mm	
MFR.:		

pcc	80%			70%			50%			30%			10%			0
pw	50%	30%	10%	50%	30%	10%	50%	30%	10%	50%	30%	10%	50%	30%	10%	0
pfc	20%			20%			20%			20%			20%			0
RCR	RCR:Room Cavity Ratio						Coefficients of Utilization(CU)									
0.0	1.19	1.19	1.19	1.16	1.16	1.16	1.11	1.11	1.11	1.06	1.06	1.06	1.02	1.02	1.02	1.00
1.0	1.12	1.10	1.08	1.10	1.08	1.07	1.06	1.05	1.03	1.02	1.01	1.00	.99	.98	.97	.96
2.0	1.06	1.03	1.00	1.05	1.02	.99	1.02	.99	.97	.99	.97	.95	.96	.94	.93	.92
3.0	1.01	.97	.94	.90	.96	.93	.97	.94	.92	.95	.93	.90	.93	.91	.89	.88
4.0	.97	.92	.89	.95	.91	.88	.93	.90	.87	.92	.89	.86	.90	.87	.85	.84
5.0	.92	.88	.84	.92	.87	.84	.90	.86	.83	.88	.85	.83	.87	.84	.82	.81
6.0	.89	.84	.81	.88	.84	.80	.87	.83	.80	.85	.82	.79	.84	.81	.79	.78
7.0	.85	.80	.77	.85	.80	.77	.83	.79	.77	.82	.79	.76	.81	.78	.76	.75
8.0	.82	.77	.74	.81	.77	.74	.80	.77	.74	.80	.76	.73	.79	.76	.73	.72
9.0	.79	.74	.71	.79	.74	.71	.78	.74	.71	.77	.73	.71	.76	.73	.71	.70
10.0	.76	.72	.69	.76	.72	.69	.75	.71	.69	.75	.71	.68	.74	.71	.68	.67



C Range: 0 - 360DEG  
 C Interval: 15.0DEG  
 Test Speed: HIGH  
 Temperature:25.3DEG  
 Operators:Meng Yongjian  
 Test Date:2017-06-05

γ Range: 0 - 90DEG  
 γ Interval: 1.0DEG  
 Test System:EVERFINE GO-2000B\_V1 SYSTEM V2.0.288  
 Humidity:52%  
 Test Distance:5.850m [K=1.0000]  
 Remarks:

## WEC AND CCEC

Test:U:220.8V I:0.0557A P:10.65W PF:0.8669 Lamp Flux:535.228x1 lm		
NAME: FF3-FS1-9W-930-40D Black	TYPE:Downlight	SERIAL No.:
SPEC.:3000K	DIM.: L153mm*W45mm*H60mm	
MFR.:		

pcc	80%			70%			50%			30%			10%			0
pw	50%	30%	10%	50%	30%	10%	50%	30%	10%	50%	30%	10%	50%	30%	10%	0
pfc	20%			20%			20%			20%			20%			0
RCR	RCR:Room Cavity Ratio						Wall Exitance Coefficients(WEC)									
0.0																
1.0	.149	.084	.027	.142	.081	.026	.129	.074	.024	.118	.068	.022	.107	.062	.020	
2.0	.139	.076	.023	.133	.073	.023	.123	.068	.021	.113	.064	.020	.105	.059	.019	
3.0	.130	.069	.021	.126	.067	.020	.117	.063	.019	.109	.060	.018	.101	.056	.017	
4.0	.123	.064	.019	.119	.062	.018	.111	.059	.018	.105	.056	.017	.098	.053	.016	
5.0	.116	.059	.017	.113	.058	.017	.106	.055	.016	.100	.053	.016	.095	.051	.015	
6.0	.110	.055	.016	.107	.054	.016	.102	.052	.015	.097	.050	.015	.092	.048	.014	
7.0	.105	.052	.015	.102	.051	.015	.098	.049	.014	.093	.048	.014	.089	.046	.014	
8.0	.100	.049	.014	.098	.048	.014	.094	.047	.013	.090	.046	.013	.086	.044	.013	
9.0	.096	.046	.013	.094	.046	.013	.090	.045	.013	.087	.044	.012	.084	.042	.012	
10.0	.092	.044	.012	.090	.044	.012	.087	.043	.012	.084	.042	.012	.081	.041	.012	

pcc	80%			70%			50%			30%			10%			0
pw	50%	30%	10%	50%	30%	10%	50%	30%	10%	50%	30%	10%	50%	30%	10%	0
pfc	20%			20%			20%			20%			20%			0
RCR	RCR:Room Cavity Ratio						Ceiling Cavity Exitance Coefficients(CCEC)									
0.0	.190	.190	.190	.163	.163	.163	.111	.111	.111	.064	.064	.064	.020	.020	.020	
1.0	.169	.158	.147	.145	.135	.127	.099	.093	.088	.057	.054	.051	.018	.017	.016	
2.0	.152	.133	.117	.130	.114	.101	.089	.079	.070	.051	.046	.041	.016	.015	.013	
3.0	.138	.113	.094	.118	.098	.082	.081	.068	.057	.047	.040	.034	.015	.013	.011	
4.0	.126	.098	.077	.108	.085	.067	.074	.059	.047	.043	.035	.028	.014	.011	.009	
5.0	.116	.086	.064	.099	.074	.056	.068	.052	.039	.040	.031	.023	.013	.010	.008	
6.0	.107	.076	.054	.092	.066	.047	.064	.046	.033	.037	.027	.020	.012	.009	.007	
7.0	.100	.068	.046	.086	.059	.040	.059	.041	.028	.035	.024	.017	.011	.008	.006	
8.0	.094	.062	.040	.081	.053	.035	.056	.038	.024	.032	.022	.015	.011	.007	.005	
9.0	.088	.056	.034	.076	.049	.030	.053	.034	.021	.031	.020	.013	.010	.007	.004	
10.0	.084	.052	.030	.072	.045	.026	.050	.031	.019	.029	.019	.011	.009	.006	.004	

C Range: 0 - 360DEG  
 C Interval: 15.0DEG  
 Test Speed: HIGH  
 Temperature:25.3DEG  
 Operators:Meng Yongjian  
 Test Date:2017-06-05

γ Range: 0 - 90DEG  
 γ Interval: 1.0DEG  
 Test System:EVERFINE GO-2000B\_V1 SYSTEM V2.0.288  
 Humidity:52%  
 Test Distance:5.850m [K=1.0000]  
 Remarks:

UGR(Unified Glare Rating) Table

Test:U:220.8V I:0.0557A P:10.65W PF:0.8669 Lamp Flux:535.228x1 lm										
NAME: FF3-FS1-9W-930-40D Black					TYPE:Downlight			SERIAL No.:		
SPEC.:3000K					DIM.: L153mm*W45mm*H60mm					
MFR.:										
ceiling/cavity	0.7	0.7	0.5	0.5	0.3	0.7	0.7	0.5	0.5	0.3
walls	0.5	0.3	0.5	0.3	0.3	0.5	0.3	0.5	0.3	0.3
working plane	0.2	0.2	0.2	0.2	0.2	0.2	0.2	0.2	0.2	0.2
Room dimensions	Viewed crosswise					Viewed endwise				
x = 2H y = 2H	6.5	7.2	6.7	7.4	7.5	5.7	6.4	5.9	6.6	6.7
3H	6.6	7.2	6.8	7.4	7.6	5.8	6.5	6.0	6.7	6.8
4H	6.6	7.2	6.8	7.4	7.6	5.8	6.4	6.1	6.7	6.9
6H	6.5	7.1	6.8	7.4	7.6	5.8	6.4	6.1	6.6	6.9
8H	6.5	7.1	6.8	7.4	7.6	5.8	6.4	6.1	6.6	6.9
12H	6.5	7.1	6.8	7.3	7.6	5.7	6.3	6.0	6.6	6.8
4H 2H	6.4	7.0	6.7	7.2	7.5	5.6	6.3	5.9	6.5	6.7
3H	6.5	7.1	6.9	7.4	7.6	5.8	6.4	6.1	6.6	6.9
4H	6.6	7.1	6.9	7.4	7.7	5.9	6.4	6.2	6.7	7.0
6H	6.6	7.0	6.9	7.4	7.7	5.9	6.3	6.2	6.7	7.0
8H	6.6	7.0	7.0	7.3	7.7	5.9	6.3	6.2	6.6	7.0
12H	6.5	6.9	7.0	7.3	7.7	5.8	6.2	6.2	6.6	7.0
8H 4H	6.5	6.9	6.9	7.3	7.6	5.8	6.2	6.2	6.6	6.9
6H	6.5	6.9	6.9	7.3	7.7	5.8	6.2	6.3	6.6	7.0
8H	6.5	6.8	7.0	7.3	7.7	5.8	6.2	6.3	6.6	7.0
12H	6.5	6.8	7.0	7.2	7.7	5.8	6.1	6.3	6.5	7.0
12H 4H	6.4	6.8	6.8	7.2	7.6	5.8	6.1	6.2	6.5	6.9
6H	6.5	6.8	6.9	7.2	7.6	5.8	6.1	6.2	6.5	7.0
8H	6.5	6.8	7.0	7.2	7.7	5.8	6.1	6.3	6.5	7.0
Variations with the observer position at spacings:										
S = 1.0H	+ 2.0 / - 2.1					+ 1.6 / - 1.9				
1.5H	+ 3.3 / - 1.8					+ 2.7 / - 1.6				
2.0H	+ 2.0 / - 1.2					+ 2.0 / - 1.3				

CIE Pub.117 Corrected 535.2 lm Total Lamp Luminous Flux.(8log(F/F0) = -2.2)

C Range: 0 - 360DEG  
 C Interval: 15.0DEG  
 Test Speed: HIGH  
 Temperature:25.3DEG  
 Operators:Meng Yongjian  
 Test Date:2017-06-05

γ Range: 0 - 90DEG  
 γ Interval: 1.0DEG  
 Test System:EVERFINE GO-2000B\_V1 SYSTEM V2.0.288  
 Humidity:52%  
 Test Distance:5.850m [K=1.0000]  
 Remarks:

## UTILIZATION FACTORS TABLE

Test:U:220.8V I:0.0557A P:10.65W PF:0.8669 Lamp Flux:535.228x1 lm		
NAME: FF3-FS1-9W-930-40D Black	TYPE:Downlight	SERIAL No.:
SPEC.:3000K	DIM.: L153mm*W45mm*H60mm	
MFR.:		

REFLECTANCE										
Ceiling	0.8	0.8	0.8	0.7	0.7	0.7	0.5	0.5	0.5	0
Walls	0.7	0.5	0.3	0.7	0.5	0.3	0.7	0.5	0.3	0
Working plane	0.2	0.2	0.2	0.2	0.2	0.2	0.2	0.2	0.2	0
ROOM INDEX	UTILIZATION FACTORS(PERCENT) $k(RI) \times RCR = 5$									
$k = 0.60$	90	84	81	90	84	81	89	84	81	77
0.80	97	92	89	97	92	88	95	91	88	85
1.00	101	96	93	100	96	92	99	95	92	88
1.25	105	100	97	104	99	96	102	98	96	92
1.50	107	103	100	106	102	99	104	101	98	94
2.00	109	106	103	108	105	102	105	103	100	95
2.50	111	108	105	109	106	104	106	104	102	96
3.00	112	109	107	111	108	106	107	105	103	97
4.00	114	112	110	112	110	108	109	107	106	99
5.00	116	113	112	113	112	110	110	108	107	100
ROOM INDEX	UF(total)									Direct
According to DIN EN 13032-2 2004			Suspended					SHRNOM = 1.25		

C Range: 0 - 360DEG  
 C Interval: 15.0DEG  
 Test Speed: HIGH  
 Temperature:25.3DEG  
 Operators:Meng Yongjian  
 Test Date:2017-06-05

$\gamma$  Range: 0 - 90DEG  
 $\gamma$  Interval: 1.0DEG  
 Test System:EVERFINE GO-2000B\_V1 SYSTEM V2.0.288  
 Humidity:52%  
 Test Distance:5.850m [K=1.0000]  
 Remarks:

## ISOCANDELA DIAGRAM

Test:U:220.8V I:0.0557A P:10.65W PF:0.8669 Lamp Flux:535.228x1 lm		
NAME: FF3-FS1-9W-930-40D Black	TYPE:Downlight	SERIAL No.:
SPEC.:3000K	DIM.: L153mm*W45mm*H60mm	
MFR.:		

Conical surface Flux(90deg):

526.83 lm

%lum = 98.4%

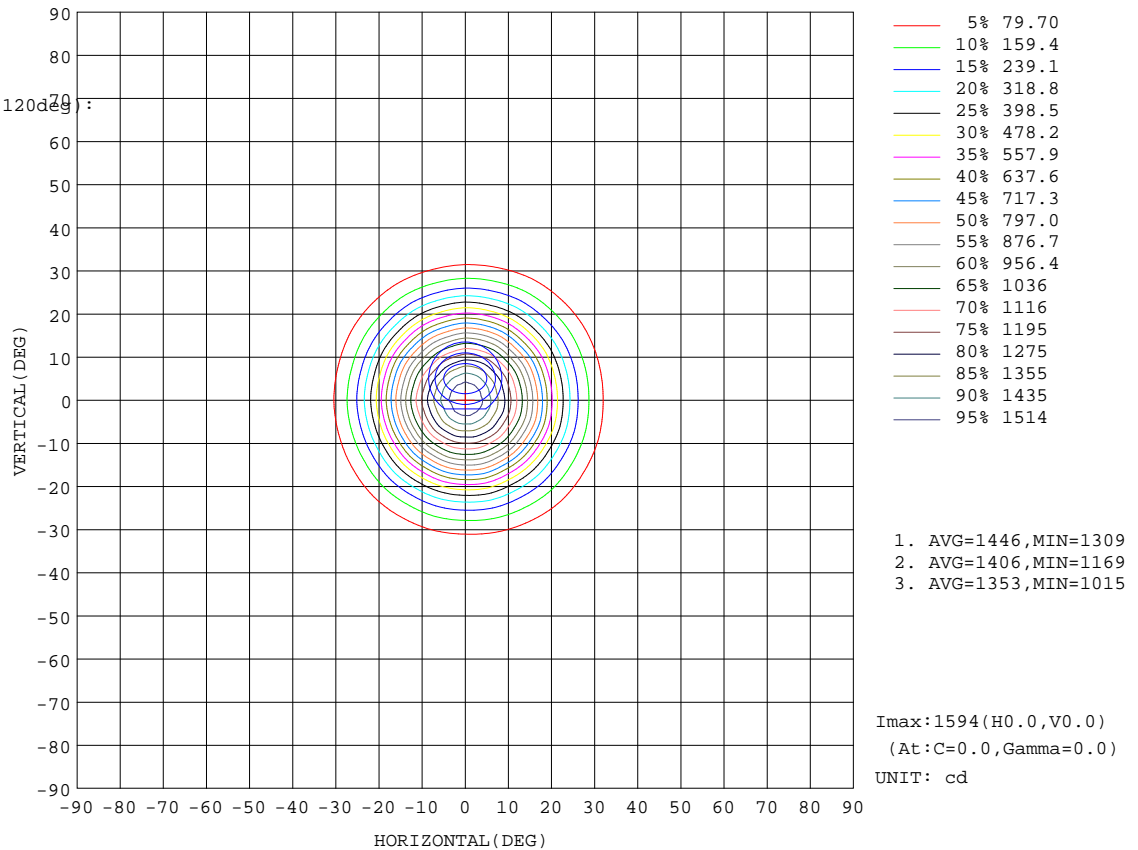
%lamp = 98.4%

Conical surface Flux(120deg):

532.43 lm

%lum = 99.5%

%lamp = 99.5%



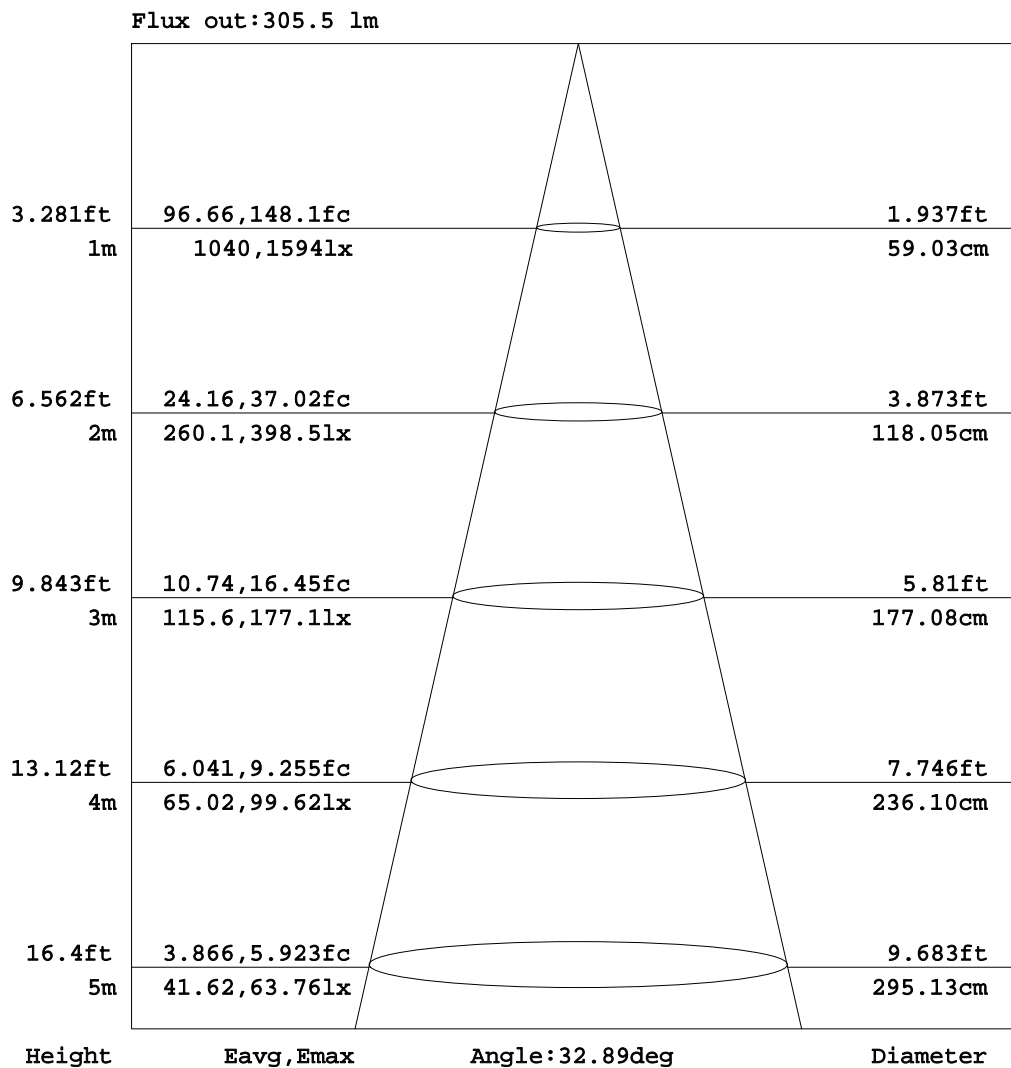
C Range: 0 - 360DEG  
C Interval: 15.0DEG  
Test Speed: HIGH  
Temperature:25.3DEG  
Operators:Meng Yongjian  
Test Date:2017-06-05

γ Range: 0 - 90DEG  
γ Interval: 1.0DEG  
Test System:EVERFINE GO-2000B\_V1 SYSTEM V2.0.288  
Humidity:52%  
Test Distance:5.850m [K=1.0000]  
Remarks:



## AAI Figure

Test:U:220.8V I:0.0557A P:10.65W PF:0.8669 Lamp Flux:535.228x1 lm		
NAME: FF3-FS1-9W-930-40D Black	TYPE:Downlight	SERIAL No.:
SPEC.:3000K	DIM.: L153mm*W45mm*H60mm	
MFR.:		



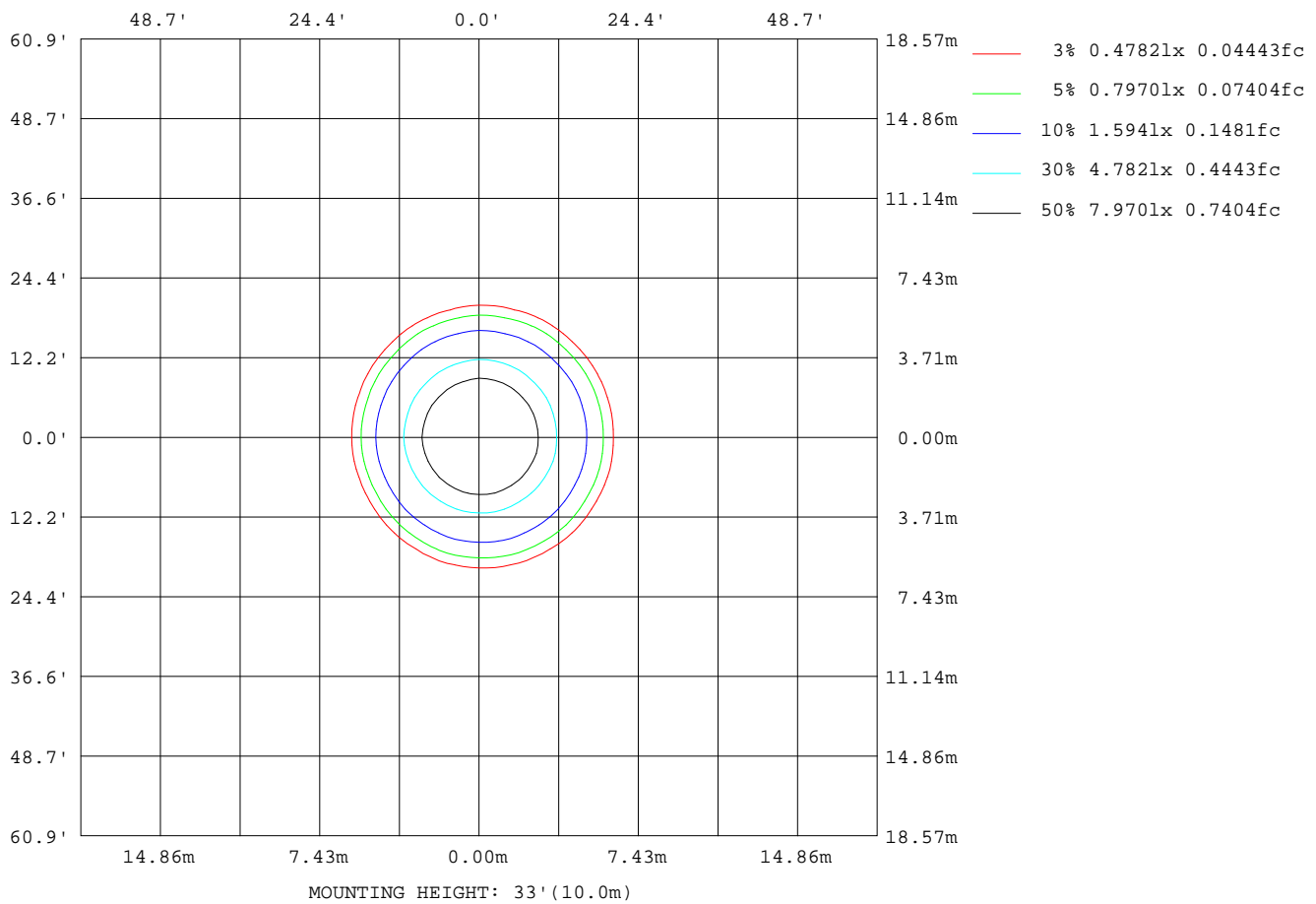
Note:The Curves indicate the illuminated area and the average illumination when the luminaire is at different distance.

C Range: 0 - 360DEG  
C Interval: 15.0DEG  
Test Speed: HIGH  
Temperature:25.3DEG  
Operators:Meng Yongjian  
Test Date:2017-06-05

γ Range: 0 - 90DEG  
γ Interval: 1.0DEG  
Test System:EVERFINE GO-2000B\_V1 SYSTEM V2.0.288  
Humidity:52%  
Test Distance:5.850m [K=1.0000]  
Remarks:

## ISOLUX DIAGRAM

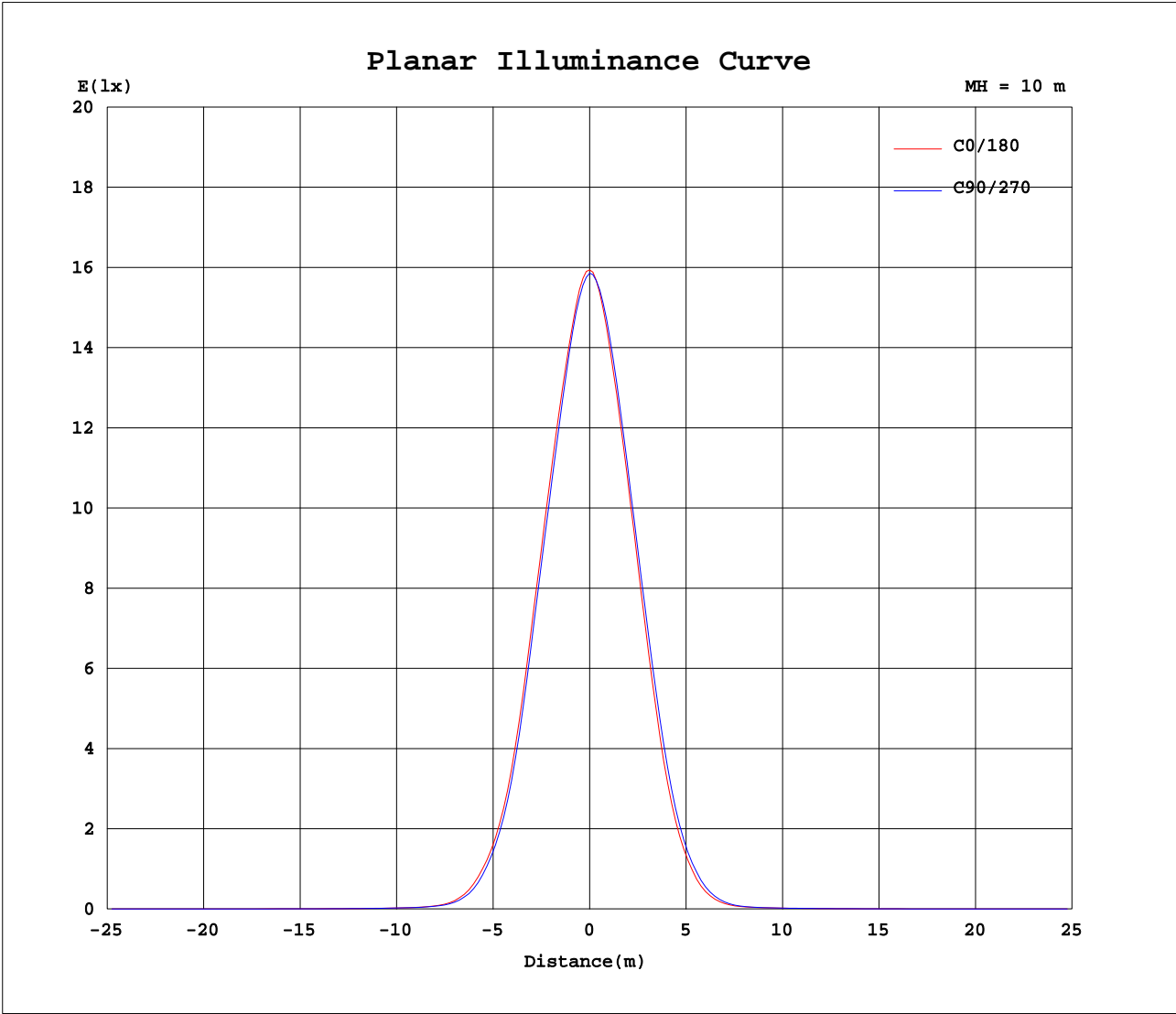
Test:U:220.8V I:0.0557A P:10.65W PF:0.8669 Lamp Flux:535.228x1 lm		
NAME: FF3-FS1-9W-930-40D Black	TYPE:Downlight	SERIAL No.:
SPEC.:3000K	DIM.: L153mm*W45mm*H60mm	
MFR.:		



C Range: 0 - 360DEG  
 C Interval: 15.0DEG  
 Test Speed: HIGH  
 Temperature: 25.3DEG  
 Operators: Meng Yongjian  
 Test Date: 2017-06-05

$\gamma$  Range: 0 - 90DEG  
 $\gamma$  Interval: 1.0DEG  
 Test System: EVERFINE GO-2000B\_V1 SYSTEM V2.0.288  
 Humidity: 52%  
 Test Distance: 5.850m [K=1.0000]  
 Remarks:

Planar Illuminance Curve



C Range: 0 - 360DEG  
C Interval: 15.0DEG  
Test Speed: HIGH  
Temperature:25.3DEG  
Operators:Meng Yongjian  
Test Date:2017-06-05

$\gamma$  Range: 0 - 90DEG  
 $\gamma$  Interval: 1.0DEG  
Test System:EVERFINE GO-2000B\_V1 SYSTEM V2.0.288  
Humidity:52%  
Test Distance:5.850m [K=1.0000]  
Remarks:

## LUMINOUS DISTRIBUTION INTENSITY DATA

Test:U:220.8V I:0.0557A P:10.65W PF:0.8669 Lamp Flux:535.228x1 lm		
NAME: FF3-FS1-9W-930-40D Black	TYPE:Downlight	SERIAL No.:
SPEC.:3000K	DIM.: L153mm*W45mm*H60mm	
MFR.:		

UNIT: cd

[illegible]

```

γ Range: 0 - 90DEG
γ Interval: 1.0DEG
Test System:EVERFINE GO-2000B_V1 SYSTEM V2.0.288
Humidity:52%
Test Distance:5.850m [K=1.0000]
Remarks:

```

## LUMINOUS DISTRIBUTION INTENSITY DATA

Test:U:220.8V I:0.0557A P:10.65W PF:0.8669 Lamp Flux:535.228x1 lm		
NAME: FF3-FS1-9W-930-40D Black	TYPE:Downlight	SERIAL No.:
SPEC.:3000K	DIM.: L153mm*W45mm*H60mm	
MFR.:		

Table--2

UNIT: cd

[illegible]

C Range: 0 - 360DEG  
C Interval: 15.0DEG  
Test Speed: HIGH  
Temperature: 25.3DEG  
Operators: Meng Yongjian  
Test Date: 2017-06-05

```

γ Range: 0 - 90DEG
γ Interval: 1.0DEG
Test System:EVERFINE GO-2000B_V1 SYSTEM V2.0.288
Humidity:52%
Test Distance:5.850m [K=1.0000]
Remarks:

```

## Photometric Data Table [cd]

G/C	0.0	15.0	30.0	45.0	60.0	75.0	90.0	105.0	120.0	135.0
0.0	1594	1592	1590	1589	1588	1586	1586	1584	1583	1582
3.0	1551	1550	1541	1540	1535	1537	1531	1531	1529	1535
6.0	1432	1432	1423	1424	1418	1419	1411	1414	1411	1411
9.0	1286	1287	1271	1274	1264	1261	1249	1252	1243	1249
12.0	1114	1113	1098	1098	1084	1083	1071	1071	1060	1062
15.0	920.3	925.5	906.9	906.6	891.1	892.8	879.0	874.4	859.5	862.5
18.0	710.0	717.8	695.7	690.5	673.1	682.4	667.4	662.1	647.0	650.0
21.0	503.0	504.6	490.1	483.5	472.8	475.9	464.2	457.1	445.2	446.4
24.0	331.1	332.0	320.3	319.1	309.7	311.8	300.8	297.4	286.4	285.0
27.0	209.8	210.8	204.4	203.6	196.2	194.7	186.7	183.0	172.8	169.6
30.0	124.1	126.0	119.1	120.8	112.5	108.6	102.1	99.15	92.10	88.63
33.0	61.93	62.29	58.61	58.48	56.84	53.07	51.06	47.87	44.44	42.66
36.0	29.46	30.26	28.65	28.12	26.24	25.76	24.24	23.25	21.79	21.10
39.0	15.78	16.45	15.95	15.70	15.01	14.66	14.25	13.68	13.21	12.66
42.0	10.27	10.75	10.64	10.57	10.03	9.850	9.602	9.352	9.098	8.809
45.0	7.752	8.044	8.212	8.258	8.030	7.768	7.521	7.434	7.269	7.207
48.0	6.249	6.522	6.637	6.684	6.529	6.229	6.005	5.989	5.884	5.895
51.0	4.925	5.063	5.125	5.179	4.989	4.806	4.582	4.596	4.604	4.618
54.0	3.703	3.782	3.779	3.840	3.712	3.616	3.448	3.472	3.437	3.474
57.0	3.028	3.025	3.070	3.145	2.969	2.942	2.844	2.773	2.798	2.800
60.0	2.582	2.548	2.617	2.640	2.540	2.489	2.372	2.358	2.376	2.391
63.0	2.127	2.111	2.129	2.183	2.142	2.085	1.965	1.942	1.969	2.006
66.0	1.724	1.724	1.731	1.779	1.709	1.722	1.602	1.567	1.621	1.689
69.0	1.366	1.379	1.394	1.427	1.344	1.352	1.276	1.226	1.285	1.328
72.0	1.062	1.057	1.110	1.099	1.016	1.011	0.9677	0.9151	0.9873	0.9829
75.0	0.6788	0.6753	0.6698	0.6665	0.6544	0.6468	0.6325	0.6293	0.6368	0.6315
78.0	0.5253	0.5309	0.5209	0.5156	0.5035	0.4937	0.4750	0.4784	0.4794	0.4828
81.0	0.3744	0.3756	0.3678	0.3669	0.3503	0.3450	0.3307	0.3341	0.3328	0.3363
84.0	0.2389	0.2379	0.2367	0.2248	0.2170	0.2051	0.1995	0.1942	0.2038	0.1964
87.0	0.1273	0.1112	0.1229	0.0959	0.1011	0.0784	0.0901	0.0697	0.0879	0.0740
90.0	0.0241	0.0219	0.0241	0.0197	0.0219	0.0197	0.0219	0.0219	0.0241	0.0241

G/C	150.0	165.0	180.0	195.0	210.0	225.0	240.0	255.0	270.0	285.0
0.0	1579	1578	1594	1592	1590	1589	1588	1586	1586	1584
3.0	1528	1526	1543	1539	1543	1538	1543	1544	1550	1548
6.0	1404	1406	1422	1413	1419	1418	1428	1432	1447	1446
9.0	1245	1247	1263	1254	1257	1251	1268	1276	1295	1299
12.0	1059	1065	1078	1065	1071	1067	1085	1090	1113	1117
15.0	856.6	863.5	873.5	865.6	875.3	873.1	888.6	892.4	917.3	917.7
18.0	641.5	648.4	660.9	656.9	669.9	668.9	684.8	688.7	711.6	709.6
21.0	437.3	442.0	454.3	450.7	465.3	468.4	483.9	489.3	506.4	506.3
24.0	276.8	280.2	289.4	286.7	295.2	297.3	312.9	317.4	329.9	330.1
27.0	162.4	164.8	171.6	168.0	173.3	176.3	187.3	190.8	200.1	202.4
30.0	83.82	84.29	88.58	87.36	91.16	94.34	101.0	104.3	110.7	113.5
33.0	40.35	40.41	42.00	41.55	44.54	45.28	48.83	51.51	54.09	56.62
36.0	19.64	19.16	19.39	19.04	19.93	20.32	21.94	22.58	24.46	24.74
39.0	11.61	11.35	11.40	11.07	11.11	10.95	11.60	11.87	12.74	13.15
42.0	8.367	8.055	8.025	7.757	7.739	7.744	7.970	8.066	8.511	8.699
45.0	6.899	6.681	6.645	6.473	6.431	6.424	6.591	6.609	6.787	6.802
48.0	5.728	5.587	5.637	5.504	5.524	5.523	5.653	5.598	5.702	5.711
51.0	4.507	4.450	4.541	4.508	4.530	4.529	4.626	4.582	4.694	4.676
54.0	3.408	3.370	3.467	3.440	3.509	3.484	3.581	3.575	3.653	3.619
57.0	2.822	2.797	2.823	2.793	2.839	2.855	2.904	2.907	2.939	2.905
60.0	2.395	2.373	2.397	2.373	2.426	2.439	2.458	2.448	2.465	2.421
63.0	2.007	1.993	2.012	1.993	2.040	2.041	2.073	2.078	2.069	2.037
66.0	1.648	1.630	1.650	1.628	1.665	1.674	1.717	1.709	1.720	1.680
69.0	1.283	1.293	1.298	1.284	1.326	1.335	1.363	1.378	1.372	1.352
72.0	0.9502	1.005	0.9936	0.9696	1.007	1.013	1.037	1.037	1.061	1.029
75.0	0.6325	0.6337	0.6511	0.6522	0.6642	0.6703	0.6838	0.6923	0.7034	0.7009
78.0	0.4751	0.4784	0.4958	0.4989	0.5133	0.5186	0.5308	0.5383	0.5461	0.5449
81.0	0.3306	0.3341	0.3427	0.3458	0.3646	0.3677	0.3799	0.3830	0.3974	0.3961
84.0	0.2017	0.2008	0.2006	0.2190	0.2247	0.2365	0.2422	0.2518	0.2553	0.2606
87.0	0.0901	0.0741	0.0761	0.1009	0.0936	0.1140	0.1089	0.1294	0.1242	0.1381
90.0	0.0219	0.0219	0.0153	0.0153	0.0153	0.0175	0.0153	0.0219	0.0175	0.0241

G/C	300.0	315.0	330.0	345.0
0.0	1583	1582	1579	1578
3.0	1546	1544	1544	1540
6.0	1445	1437	1436	1425
9.0	1302	1291	1292	1280
12.0	1121	1112	1118	1111
15.0	923.9	912.6	922.3	917.9
18.0	715.5	705.2	716.9	707.6
21.0	512.8	507.9	514.2	504.5

C Range: 0 - 360DEG

C Interval: 15.0DEG

Test Speed: HIGH

Temperature: 25.3DEG

Operators: Meng Yongjian

Test Date: 2017-06-05

γ Range: 0 - 90DEG

γ Interval: 1.0DEG

Test System: EVERFINE GO-2000B\_V1 SYSTEM V2.0.288

Humidity: 52%

Test Distance: 5.850m [K=1.0000]

Remarks:

## Photometric Data Table [cd]

24.0	339.1	336.1	340.8	333.6
27.0	209.6	208.1	213.0	212.5
30.0	121.7	120.1	125.4	125.2
33.0	58.69	59.04	61.43	61.81
36.0	26.56	27.21	29.14	28.89
39.0	14.01	13.93	14.68	15.21
42.0	8.942	9.163	9.584	9.877
45.0	6.957	7.147	7.388	7.465
48.0	5.825	5.965	6.124	6.193
51.0	4.722	4.783	4.904	4.902
54.0	3.642	3.663	3.712	3.679
57.0	2.906	2.945	2.941	2.997
60.0	2.463	2.472	2.502	2.559
63.0	2.073	2.087	2.110	2.102
66.0	1.726	1.737	1.728	1.735
69.0	1.385	1.381	1.378	1.389
72.0	1.064	1.046	1.055	1.057
75.0	0.6926	0.6901	0.6860	0.6729
78.0	0.5395	0.5383	0.5395	0.5273
81.0	0.3952	0.3896	0.3908	0.3786
84.0	0.2553	0.2540	0.2509	0.2475
87.0	0.1220	0.1337	0.1198	0.1337
90.0	0.0197	0.0262	0.0175	0.0219

C Range: 0 - 360DEG  
C Interval: 15.0DEG  
Test Speed: HIGH  
Temperature: 25.3DEG  
Operators: Meng Yongjian  
Test Date: 2017-06-05

γ Range: 0 - 90DEG  
γ Interval: 1.0DEG  
Test System: EVERFINE GO-2000B\_V1 SYSTEM V2.0.288  
Humidity: 52%  
Test Distance: 5.850m [K=1.0000]  
Remarks: